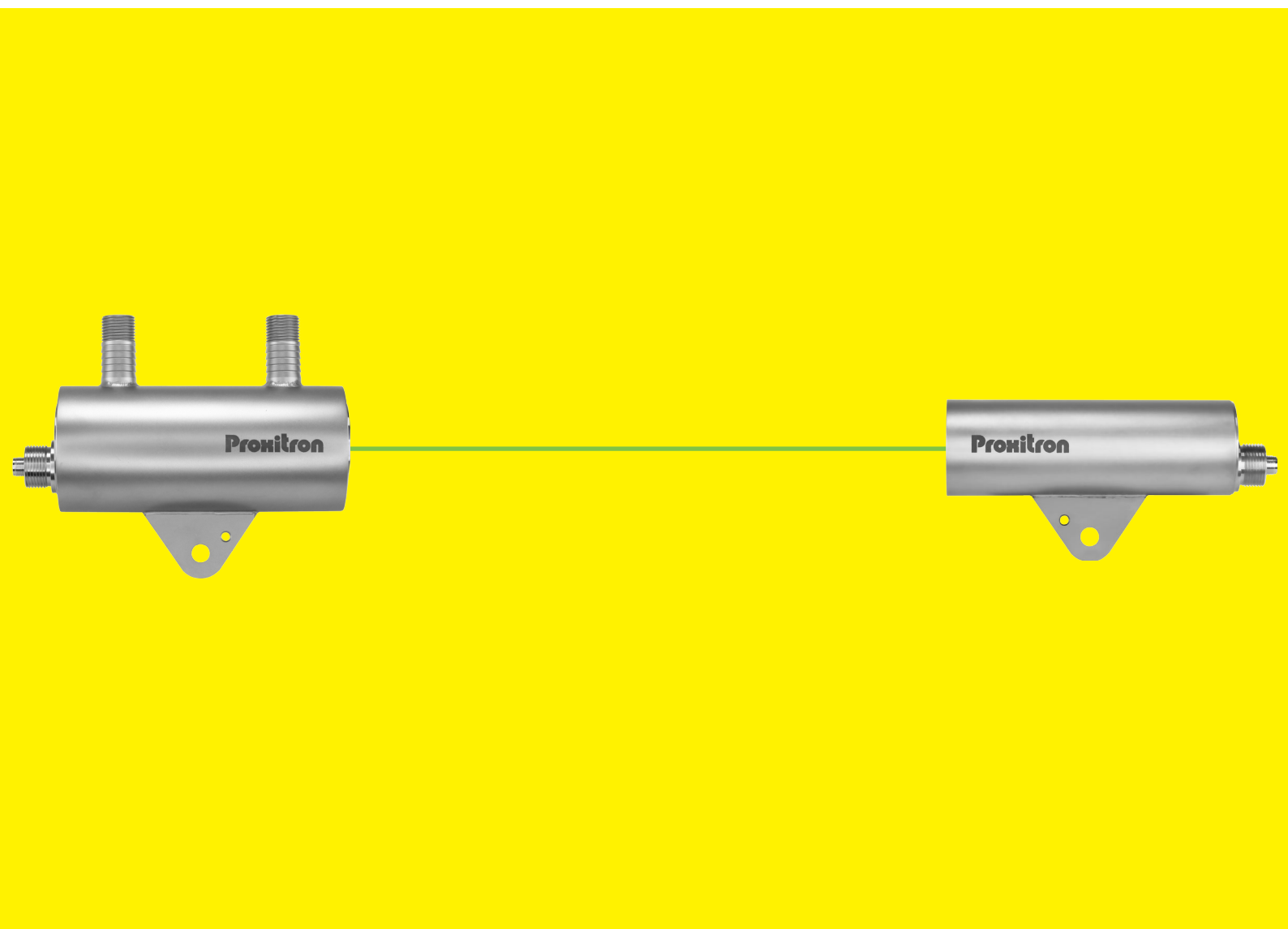


LASER Light Barriers

LLX series with digital interface

accurate detection of cold or hot objects

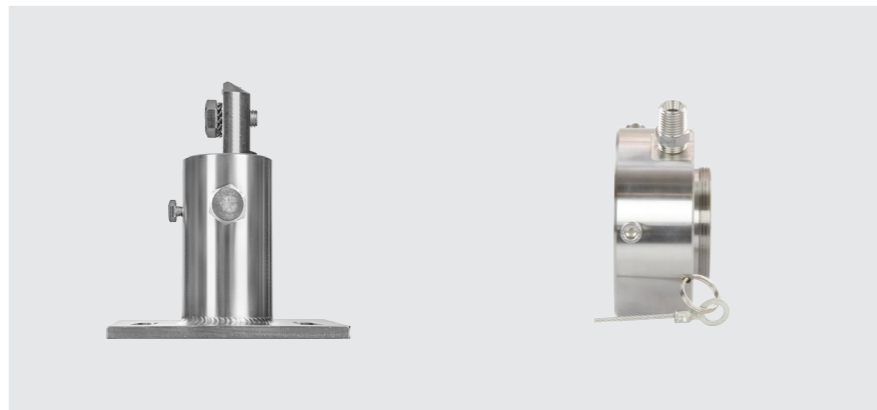




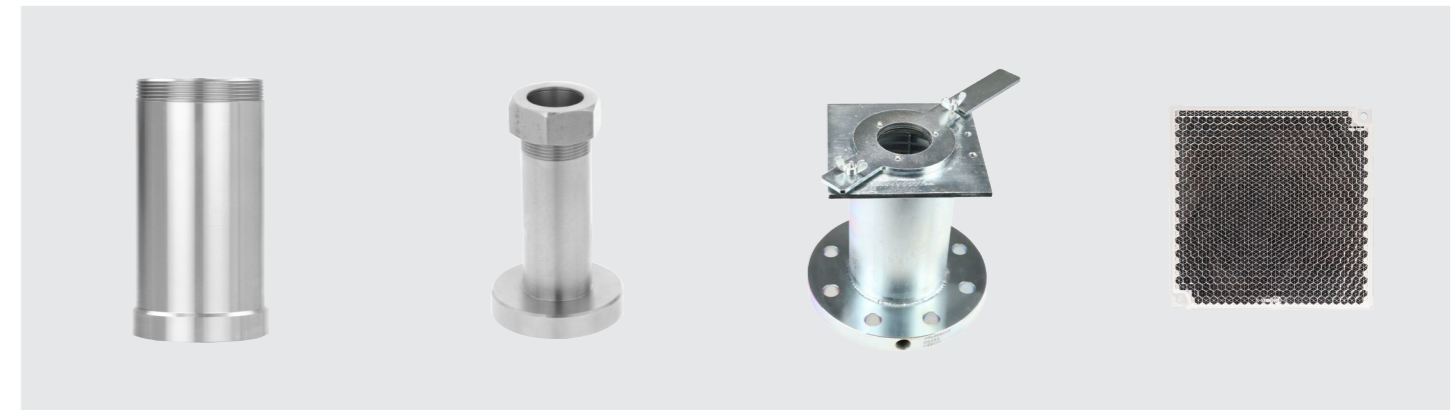
Ambient temperature	50 °C	200 °C with water cooling
Housing [mm]	Ø57 x 170	Ø76 x 170
Housing material	stainless steel	stainless steel
Through-beam LASER sensor transmitter type	LLAA 600.3 S4	LLAB 600.3 S4
Through-beam LASER sensor receiver type	LLXSA 600.3A GV S8	LLXSB 600.3A GV S8
Max. sensing range / operating range	2500 m / 1500 m	2500 m / 1500 m
LASER retroreflective sensor	LLXRA 600.3A GV S8	LLXRB 600.3A GV S8
Retroreflective * max range / operation	200 m / 150 m	200 m / 150 m

*The max range of the retroreflective sensor is referred to the ORL 01 reflector

Accessories for LASER Light Barriers



Accessories for LASER Light Barriers



Accessory	Swivel stand	Air purge adapter	Protection tube	Tube	Furnace window	Reflector
Function	mounting	pollution control	maximize air purge effect, protect against sparks	protection against IR radiation	protection against temperature and flame	retroreflective sensor
Material	stainless steel	stainless steel	stainless steel	stainless steel	stainless steel	plastics/glass
Type	HM 2	OL 34	OL 37	OL 19	HL 133	ORL 01
Description	massive swivel stand	for Ø57	length 100 mm	for Ø57	furnace window big	up to +60 °C
Type	HM 4	OL 35	OL 38	OL 21	HL 201	ORL 02
Description	light mounting bracket	for Ø76	length 150 mm	for Ø76	furnace window small	up to +100 °C
Type	HM 6			OL 36	HM 13	OR 05
Description	mounting unit for mirror			for air purge adapter	bracket for Ø57	up to +500 °C
Type					HM 14	
Description					bracket for Ø76	

LASER Light Barriers LLX Series - General Information

Proxitron light barriers of the LLX series, with a number of functions and extremely high range, are ideal for the detection of hot and cold objects. The LASER sensors are the ultimate solution for the detection of small objects or contours, when high accuracy and reproducibility are required. The sensors can be adjusted via software and the teach function to the most different working conditions. The adjustable on- and off-delay offers multiple possibilities. The front optic lights up for simple installation over large distances and the alarm function provides warning against pollution and excessive temperature. The sensors robust design guarantees safe operation also in case of vibrations. The lens is made of temperature-resistant glass and withstands radiated heat. For higher ambient temperatures housing variants with cooling jacket are available.

- **detection of hot and cold objects**
 - **material tracking in drying ovens**
 - **Detect material edges with high accuracy**
 - **Detection of small objects**
 - **jam detection**
 - **prevention of obstruction material**
 - **material tracking on conveyors in hot areas**
 - **feeding control in high temperature processes**
 - **vehicle height monitoring in outdoor conditions**
-
- **LASER Class 2 can be used without additional protective action**
 - **Individual settings for three switching outputs**
 - **Alarm for excessive temperature or pollution**
 - **Tech and test function**
 - **extremely fast (0,5 ms/1000 Hz)**
 - **robust and maintenance-free**
 - **wide range of accessories**

Common technical features

Light type	LASER, class 2
Supply voltage	12 - 55 V DC
Switching output	3 x PNP normally open / normally closed (can be parameterized)
On / off delay adjustable	0 – 60000 ms
Response time / switching frequency	≤ 0,5 ms / 1000 Hz
Adjustment aid	optical with LED, software
Alarm function	pollution, overtemperature
Digital communication	RS 485 MODBUS RTU
Software functions	configuration of switching outputs, on/off delay, alarm function, status display, teach-in, internal temperature

