

- Sensor surface 150 x 35 mm
- Motion detection
- Al and Fe cans
- Adjustable switch-on delay
- Adjustable switch-off delay

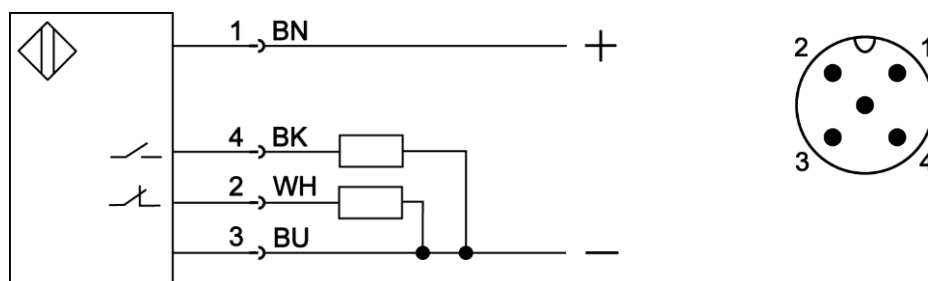
Product Characteristics

Type	DKU 015.28 G S4
Art.-No.	2408J
Application	Motion detection of metallic cans on conveyor belts

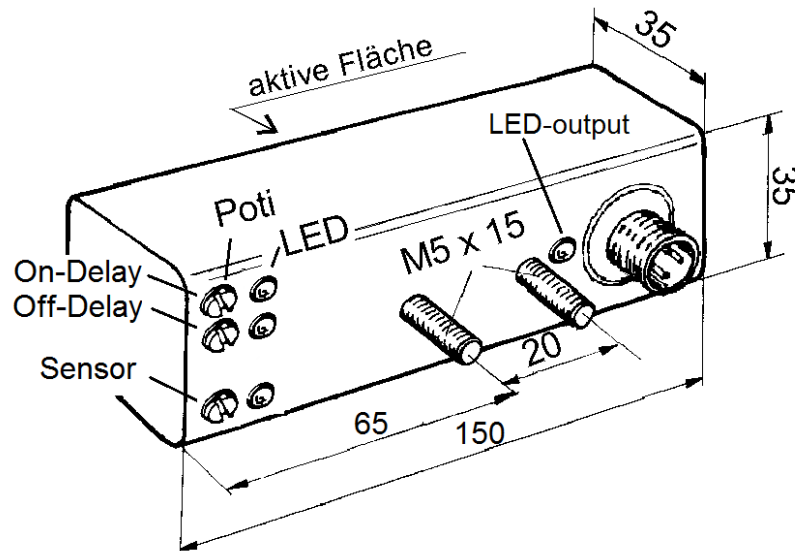
Technical Data

Rated operating distance (S_n)	30 mm
Operating distance adjustable	yes
Output 3x PNP	PNP normally open PNP normally closed
Switch-on delay adjustable	approx. 0 - 10s
Switch-off delay adjustable	approx. 0 - 10s
Transport direction specified	yes
Location at metal	non flush
Supply voltage (U_B)	10 -30 V DC
Ripple voltage	max. 15 %
No-load current (I_o)	≤ 15 mA
Continuous current	0 – 400 mA
Short-circuit protection	yes
Reverse polarity protection	yes
Ambient temperature	-25 ... +70 °C
Protection class	IP 67
Housing material	plastic PVC
Functional display	1x duo LED red / green 2 x LED green 1x LED yellow
Connection	plug S4 (M12 x 1 A)
Weight	

Connection



Dimension (mm)



Accessories (in scope of supply)

	Type	Art.-No.
-	-	-

Accessories (not in scope of supply)

	Type	Art.-No.
Mounting bracket	HM 9	9816I
Mounting bracket, adjustable can line mounting with bracket HM 9 possible.	HM 7	9816G
Female angle plug S4 (M12 x 1 A) attachable cable 4 x 0.75 mm ²	ST 040	9841A
Female straight plug S4 (M12 x 1 A) attachable cable 4 x 0.75 mm ²	ST 040G	9842D
Connection cable with female angled plug S4 (M12 x 1 A) 2 m PVC cable 4 x 0,25 mm ²	ST 041/4-2	9841D
Connection cable with female angled plug S4 (M12 x 1 A) 5 m PVC cable 4 x 0,25 mm ²	ST 041/4-5	9841E
Connection cable with female straight plug S4 (M12 x 1 A) 5 m PVC cable 4 x 0,25 mm ²	ST 043/4-5	9841T

Further information

	Document
Operating manual	